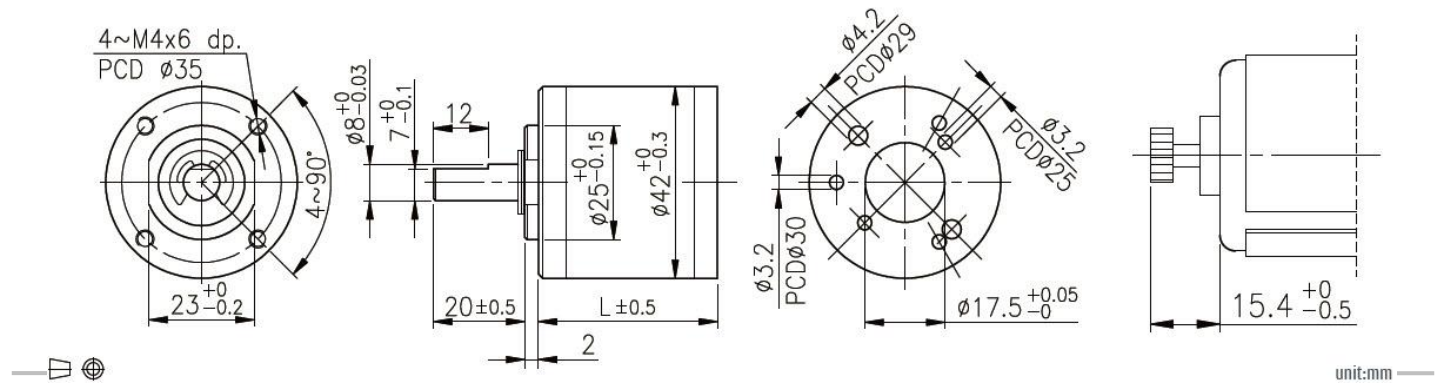


# Planetary gearbox

## P421

### 外形尺寸&马达装卸方法/Appearance Size & Motor Installation



### 产品规格/Product Specifications

外壳材质 Housing material	输出轴承 Bearing at output	径向负荷 Radial load (10mm from flange)	轴向负荷 Shaft axial load	主轴最大承受压入力 Shaft press fit force, max.	径向间隙 Radial play of shaft	轴向间隙 Thrust play of shaft	背隙 (无负载时) Backlash at no-load
金属 Metal	含油轴承 Sleeve bearings	≤5Kgf	≤3Kgf	≤15Kgf	≤0.08mm	≤0.3mm	≤3°
金属 Metal	滚珠轴承 Ball bearings	≤8Kgf	≤3Kgf	≤15Kgf	≤0.05mm	≤0.3mm	≤3°

### 马达齿轮规格/Pinion Specifications

模数 Module	齿数 No. of teeth	压力角 Pressure angle	孔径 Hole diameter	减速比 Reduction ratio.
0.6	12	20°	3.98	1/24,1/144,1/864
0.6	15	20°	4.98	1/720,1/1062,1/1470,1/2500,1/3000,1/3600
0.6	18	20°	4.98	1/17,1/61,1/104,1/212
0.6	24	20°	4.98	1/14,1/49,1/84,1/504
0.6	20	20°	4.98	1/4

### 齿轮箱规格/Product Specifications

减速比 Reduction ratio	1/4	1/14	1/17	1/24	1/49	1/61	1/84	1/104	1/144	1/212	1/294	1/504	1/642	1/720	1/864	1/1062	1/1470	1/2500
额定允许扭力(Kg.cm Max.) Rated tolerance torque	3.0	8.0	8.0	8.0	18.0	18.0	18.0	20.0	20.0	25.0	25.0	30.0	30.0	30.0	30.0	30.0	30.0	30.0
瞬间允许扭力(Kg.cm) Max momentary tolerance torque	9.0	24.0	24.0	24.0	54.0	54.0	54.0	60.0	60.0	75.0	75.0	90.0	90.0	90.0	90.0	90.0	90.0	90.0
效率 Efficiency	80%	70%	70%	70%	60%	60%	60%	60%	60%	50%	50%	50%	50%	50%	50%	40%	40%	40%
长度 (L-mm) Length (L-mm)	32.5	39.2	39.2	39.2	45.9	45.9	45.9	45.9	45.9	52.6	52.6	52.6	52.6	52.6	52.6	59.6	59.6	59.6
重量(滚珠轴承) Weight (g) /Ball bearings	139	191	191	191	231	231	231	231	231	281	281	281	281	281	281	326	326	326